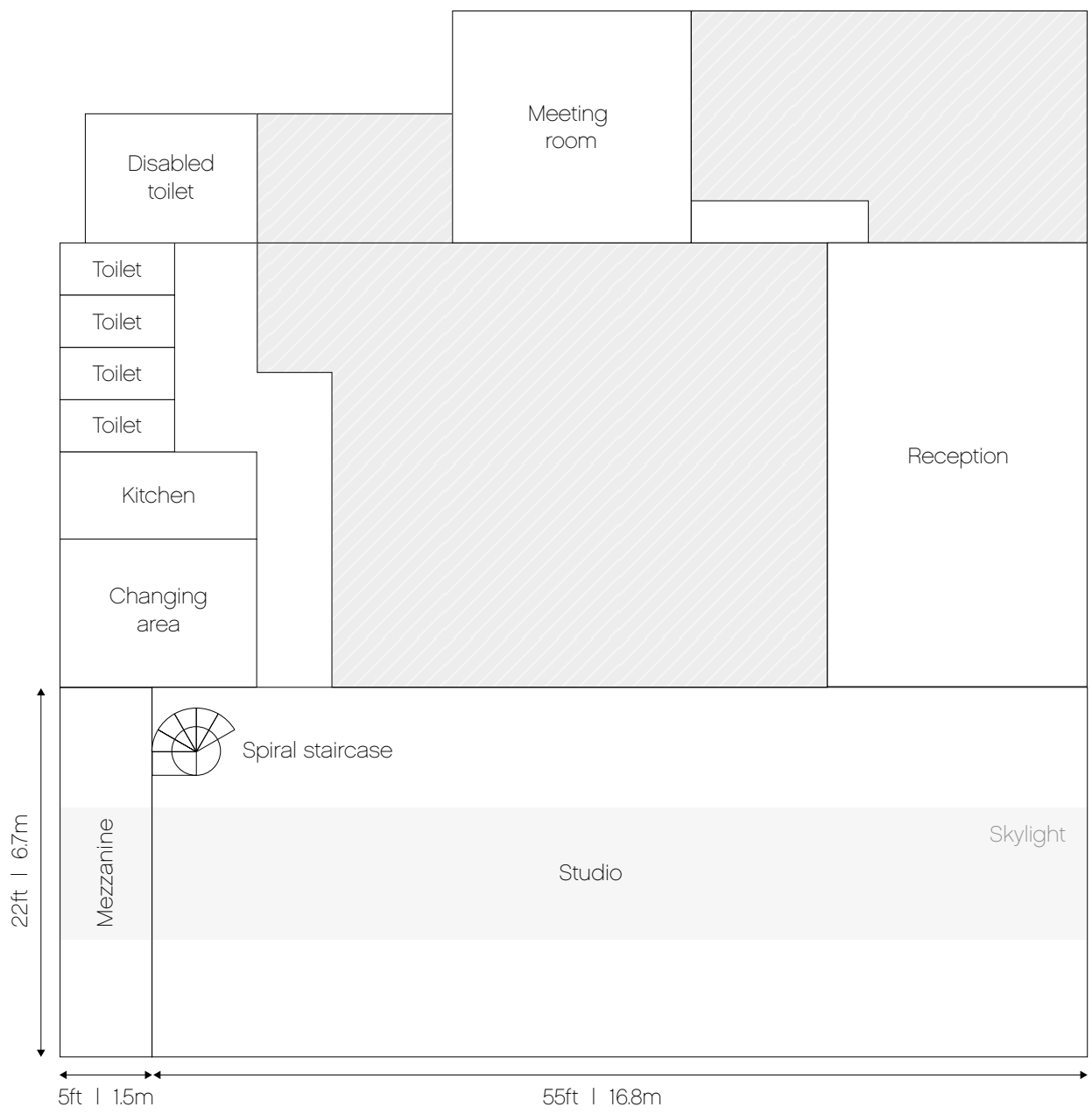


The details:

- 1450 sq ft self-contained hire space
- Double-height pitched roof
- Excellent daylight from full length glass roof
- Electronic blinds achieve 90% blackout
- Mezzanine viewing / shooting platform, reached by a spiral staircase
- Off-white painted brick walls
- Authentic concrete floors
- Air conditioning and ventilation system
- Cast iron radiators
- Two free parking spaces with up to eight more available
- Shower room with disabled access
- Fully fitted kitchen with facilities for catering
- Styling / make-up room
- Comfortable client areas
- Nespresso coffee machine
- Free high speed Wi-Fi access
- Integrated sound system with AV points
- Hangers and rails
- Steamer, iron and ironing board
- Polyboards and stands

Other services we can provide at an additional cost:

- One of our experienced photographers to shoot your commission
- Retouching from our in-house team and colour proofing services
- Up to eight additional parking spaces
- Colorama backgrounds
- Lighting hire
- Catering
- Meeting room hire





PSc Photography
2 Gunnerly Terrace
Cornwallis Road
Royal Arsenal
London
SE18 6SW

☎ 020 7613 3633
🌐 www.pscphotography.com
✉ studio@pscphotography.com
🐦 [@pscstudio](https://twitter.com/pscstudio)
📷 [@pscstudio](https://www.instagram.com/pscstudio)